



**WORLD'S BEST  
ALLOY BULLBARS**

**Strongest Built  
Australian Made  
Lifetime Warranty**

**PN: EAGW20SY**



## **Fitting Guide & Owners Manual**

**GWM CANNON  
01/2021 on**



Big Tube Bullbar with Bumper Lights  
VEHICLE FRONTAL PROTECTION SYSTEM (VFPS)  
FOR AIR BAG & ADR COMPLIANT VEHICLES

# Index

---

## **Pages 3-5**

ECB's Benefits

Product Care

## **Pages 6-7**

Stage 1 - Vehicle Testing and Preparation

Stage 2 - Remove radiator cover

Stage 3 - Remove top grille

Disconnect camera

Stage 4 - 5 Bumper removal

Stage 6 - Remove underbelly guard

## **Pages 8-9**

Stage 7 - Removal side bumper

Stage 8 - Disconnect harness

Stage 9 - Removal bumper support

Stage 10 - Bumper stiffeners

Stage 11 - Relocation earth lead

Stage 12 - Bumper separation

## **Pages 10-11**

Stage 13 - Camera mount/ harness

Stage 14 - Trim lower grille

Stage 15 - Refit bumper

Stage 16 - Mount fitment

Stage 17 - Camera fitment

Stage 18 - Parking sensors

## **Pages 12-13**

Stage 19 - Indicator/park/DRL

Stage 20 - Clip lock

Stage 21 - Electrical

Stage 22 - Sensor harness/Camera

Stage 23 - Protection bar fitment

Stage 24 - Underbelly guards

## **Pages 14-15**

Stage 25 - Trim inner guards

Stage 26 - Trim flares

Stage 27 - Bumper lights

Stage 28 - Final installation checks

Final Checks

## **Pages 16-17**

Installation Kit

Finished Product

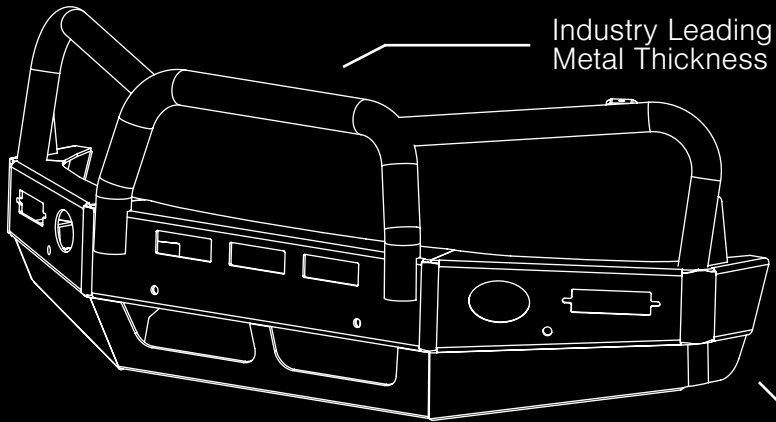
## **Pages 18-19**

Notes

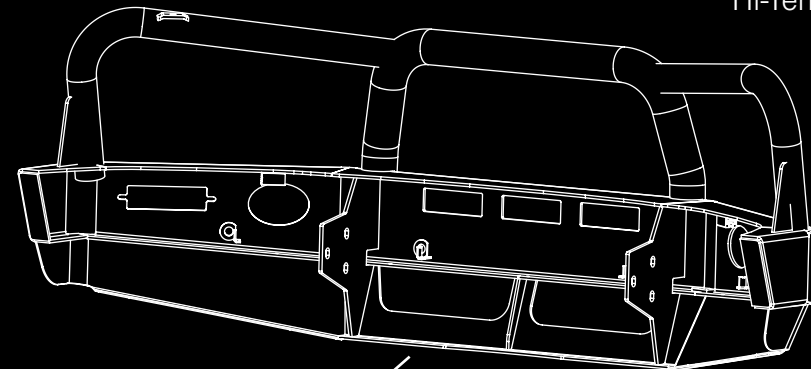
Warranty Registration

# The Features of ECB

---



6mm Thick  
Hi-Tensile Alloy



Fully Welded  
Construction

# ECB's Benefits

---

## **Built to Perform - Not to a Price**

ECB are proud to claim that their channels are not jigsaw puzzles that are bolted together, or even multiple sections welded together. Where any welding is required, it is done to the highest standards by qualified welders, not machines.

## **Anti-Corrosive Nature of Alloy**

The composition of ECB's alloy has a very high resistance to corrosion. Rust not only looks unappealing but greatly reduces the strength of the metal. Rust can and will weaken the structural integrity of a steel bullbar effectively rendering it useless over time.

## **Australian Made**

Established in 1971, we utilize decades of experience designing, engineering and building products in Australia to suit Australian conditions. We can ensure the best quality controls and help support the local economy and employ over 90 proud Australians.

## **Weight Saving Benefits**

An ECB alloy bullbar is typically half the weight of a steel bullbar. Unnecessary suspension upgrades are not required. The reduced weight also contributes to increased fuel economy and less wear and tear on tyres, suspension and braking components.

## **Welds That Work**

ECB uses only the strongest welds and welding techniques to ensure every product is as structurally sound as possible. MIG (Metal Inert Gas) welding techniques are employed ensuring the welds are as thick as the thickest section of alloy's being joined together.

## **Lifetime Warranty**

ECB provide a lifetime warranty and consumer guarantee on all of our manufactured products. This guarantee highlights the confidence in our ability and provides complete peace of mind for your purchase for the lifetime you own your vehicle.

# Product Care

---

## Polished Products

Being a premium mirror polished finish, regular maintenance will be required to keep that iconic ECB shine. We recommend using our own brand of Aluminium Polish. This formula has been tried and tested and in our opinion is the world's best standard.

**Directions:** Apply a small quantity of Aluminium Polish to a clean soft cloth and rub the metal surface. The longer the rubbing the brighter the surface becomes. Wipe off Aluminium Polish with clean soft cloth. Also suitable for motorized buffing machines.

**Note:** There are more specific details on the polish bottle. Please read before use.

## Powder coated Products

Our powder coated finishes are very low maintenance. In fact there is actually very little you will ever need to do for this product. Just clean it as you would your car and it will stay looking good as new.

## ECB Aluminium Polish

When you're looking for that showroom finish look for your polished automotive products, you can depend on the no compromise quality of East Coast Bullbars Aluminium Polish. This specifically designed product is the best polish available and we guarantee that this \$#!+ works. Within our decades of manufacturing polished alloy products we have trialled a large range of different polishes on the market and believe without a doubt that nothing beats the finish quality of East Coast Bullbars Aluminium Polish.

East Coast Bullbars Aluminium Polish is excellent for use by hand and is ideal for polished bullbars, nudge bar and stainless steel products. This polish will clean, polish and protect your product from the elements whilst bringing your products back to that showroom finish look.



# EAGW20SY

## Stage 1

- Test drive vehicle to ensure all driver assists are correctly working and to gauge effectiveness. Park on a flat level surface.
- Apply parking brake and lift bonnet.
- Unwrap ECB Protection bar and disconnect mounts. Discard bolts.
- Ensure these instructions are left with the vehicle owner and/or operator.



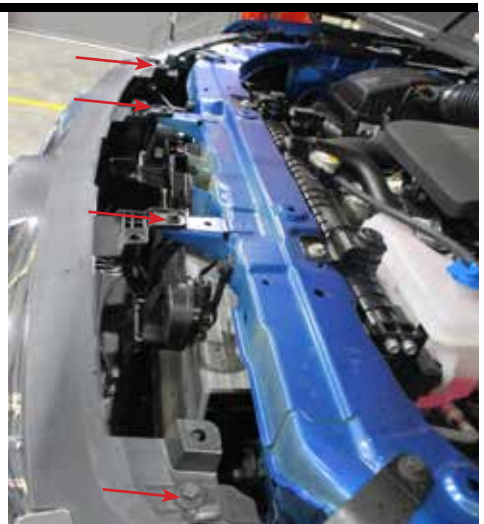
## Stage 2

- Remove top radiator cover twelve (12) push pull clips.
- Fold cover back onto top of engine.



## Stage 3

- Remove four (4) 10mm head bolts from top of grille between headlights.
- Reach down inside grille and disconnect camera, behind logo.



# GWM CANNON 01/21 on

## Stage 4

- From underside remove eight (8) 10mm head bolts.



## Stage 5

- On front of inner guards remove four (4) phillips head screws and two (2) push pull clips (per side).
- Gently pull flares away from guards, just past bumper.



## Stage 6

- Remove under body guard, three (3) 13mm head bolts at rear, loosen only two (2) 10mm head bolts at front.
- Push guard forward and down to remove.



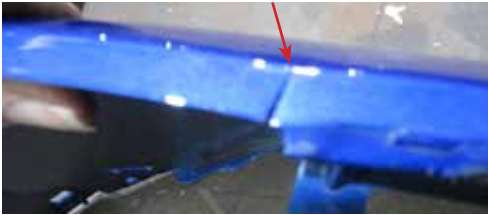
# EAGW20SY

## Stage 7

- Remove two (2) black phillips head screws from outer guard.

CAUTION: Bumper can easily be damaged at this step if care is not taken.

- Pull bumper away from vehicle and carefully release clips under lights with small screw driver, do this with extreme caution as to not tear bumper.



## Stage 8

- On passenger side of vehicle under bumper, disconnect wiring harness.
- Gently remove bumper and grille as one piece.



## Stage 9

- Remove bumper support four (4) 13mm head bolts.
- Remove crash cans five (5) 13mm head bolts per side.





# GWM CANNON 01/21 on

## Stage 10

- Remove six (6) bumper stiffeners, 8mm head screws.
- Remove steel cushioners, two (2) per side 10mm head bolts.



## Stage 11

- Rotate bottom end of earth strap on passenger side of vehicle.
- This is so strap does not hang below under belly guard when complete.



## Stage 12

- Remove two (2) phillips screws on side of bumper and two (2) phillips screws on outer panels which sit under lights.
- Remove outer infill panels.
- Separate lower bumper grille.



# EAGW20SY

## Stage 13

- Remove camera, two (2) phillips head screws.
- Remove harness and parking sensors from lower bumper.



## Stage 14

- Trim lower grille, black bumper clip section under main grille.

CAUTION: Ensure harness is not in cutting area.



## Stage 15

- Refit side infill panels to grille in reverse of step 12.
- Refit grille and infill panels to vehicle in reverse of step 7 and 3. Do not fit radiator cover at this point.



# GWM CANNON 01/21 on

## Stage 16

- Fit ECB steel mounting bracket to front of chassis rail using five (5) M10 x 1.25 x 35mm bolts, flat washers and spring washers (supplied) (per side).
- In rear chassis rail holes, install one (1) M12 x 1.75 x 40mm bolt, flat washer, spring washer and M12 x 1.75 nut and washer on wire (supplied). Feed nut on wire through hole on opposite side of rail.
- For lower holes, install M10 x 1.5 x 100mm bolt, flat washer, spring washer and M10 x 1.5 nut (supplied). Finger tighten only.
- Align mount, tighten all bolts.



## Stage 17

- Fit camera into camera housing and align, secure with M5 x 20mm bolts, M5 flat washers and M5 Nyloc nuts (supplied).



## Stage 18

- Place parking sensors into housings and secure with zip ties.

NOTE: Zip ties are for Sensor security only. Do not over tighten zip ties, as this may cause sensors to give false readings.



# EAGW20SY

## Stage 19

- Install harness into protection bar. Zip tie to bottom leg of channel. Connect camera and sensors.



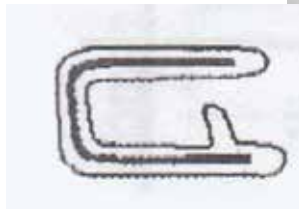
## Stage 19

- Fit ECB LED indicator/park lights into protection bar as per instructions supplied with the LED indicator kit.



## Stage 20

- Attach 6mm clip lock trim (supplied) to top of ECB protection bar. NOTE: Trim off lower edge on an angle so trim will sit flush with end of protection bar.

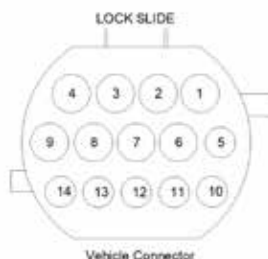


# GWM CANNON 01/21 on

## Stage 21

- Splice ECB wiring harness into wiring harness behind headlight using cable locks (supplied). Ensure harness is clear of sharp edges and moving parts.

PIN NUMBER	COLOUR	USE
2	Red/ Black	Indicator
3	Black	Earth
5	Red/ Yellow	Park light
8	Grey/ Black	DRL



## Stage 22

- Fit protection bar to steel mounting bracket using M12 x 1.75 x 40mm bolts, flat washers, spring washers and M12 x 1.75 nuts. Finger tighten only.
- Align protection bar with vehicle and tighten all bolts.



## Stage 24

- Loosely install alloy underbelly guard to top of skirt leg using M6 x 25mm bolts, flat washers and Nyloc nuts (supplied) in front holes and M8 x 30 bolts, 5/16 x 1 1/4 flat washer and spring washers (supplied) in rear holes.
- Slide original equipment rear underbelly guard onto front bolts and install using three (3) original rear bolts. Tighten all bolts
- Fit side guards using five (5) M6 x 25 mm bolts, flat washers and Nyloc nuts.





# EAGW20SY

## Stage 25

- Trim inner guards in line with underbelly guards.
- Drill 6.5 mm hole in inner guard using hole in underbelly guard as a guide.
- Use M6 x 25mm bolt, flat washers and M6 Nyloc nut (supplied) to secure.



## Stage 26

- Neatly trim flares and refit to vehicle.

NOTE: Retain screw under the cut line of the bumper to allow retaining of the guard liner/bumper.



## Stage 27

- Attach ECB bumper lights to protection bar. Place M6 x 20 bolts, spring washers (supplied) through light mount from inside and attach nut to top. Slide assembly into light mount in Protection bar and centralize light to hole. TIGHTEN FIRM ONLY.
- Install bumper light surrounds (supplied) to bumper light openings with large side of surround to inside of opening



# GWM CANNON 01/21 on

---

## Stage 28

- Refit radiator cover to top of grille using original equipment fasteners.
- Test Vehicle to ensure all safety features are working correctly.

---

## Final Checks

---

### Ensure Number Plate is Clearly Visible

Note: When fitting/refitting the license plate to the vehicle, ensure there is no obstruction to license plate vision in accordance with local authorities. If required relocate license plate to an alternate location.

### Further VFPS Notes

1. Do not attach VFPS to the vehicle using anchorages not intended for this purpose (e.g. engine mounting bolts).
2. Do not use this product for any vehicle make or model, other than those specified by the VFPS manufacturer.
3. Do not remove the plaque or label from the VFPS.
4. Do not modify the structure of the VFPS in any way.
5. No accessory or fitment should project forward of the VFPS forward profile.
6. **Ensure these instructions are left with the vehicle owner and/or operator.**

### Important Information

Periodically check bolts and nuts for correct tightness, especially if traveling on rough roads.

# Installation Kit

---

## Installation Kit

1 - ECB steel mounting bracket	2 - M6 x 20mm bolts
1 - Centre under body guard	28 - M6 Flat washers
1 - Pair side under body guards	2 - M6 Spring washers
8 - M12 x 1.75 x 40mm Bolts	14 - M6 Nyloc nuts
14 - M12 Washers	2 - M6 nuts
8 - M12 Spring washers	2 - M5 x 20mm Bolts
6 - M12 x 1.75 Nuts	4 - M5 Flat Washers
2 - M12 x 1.75 Nut and washer on 300mm wire	2 - M5 Nyloc nuts
2 - M10 x 1.5 x 100mm Bolts	1 - Indicator / park kit / DRL (ICLED105ECB)
10 - M10 x 1.25 x 35mm Bolts	1 - Bumper light kit
14 - M10 Flat washers	1 - Quick click kit (IC10D40S1004ECBH)
12 - M10 Spring washers	2 - Bumper light surrounds
2 - M10 x 1.5 Nuts	8 - Cable locks
2 - M8 x 1.25 x 30mm Bolts	1 - 2500mm length 6mm clip lock
2 - 5/16 x 1 1/4 Flat washer	2 - Parking Sensor housings
2 - M8 Spring washers	10 - 150mm zip ties
14 - M6 x 25mm Bolts	6 - 6mm Air Vents



# Finished Product

---



\_\_\_\_\_

[illegible]

---

---

# Warranty Registration

---

## Contact Details

Name: \_\_\_\_\_

Address: \_\_\_\_\_

Product: **EAGW20SY** \_\_\_\_\_

Email: \_\_\_\_\_

Phone: \_\_\_\_\_

Work Order Number: \_\_\_\_\_

You can find this on the silver label  
of your ECB product.

By submitting this registration you automatically subscribe to ECB's mail outs.  
You can unsubscribe at any time.

## Register Online

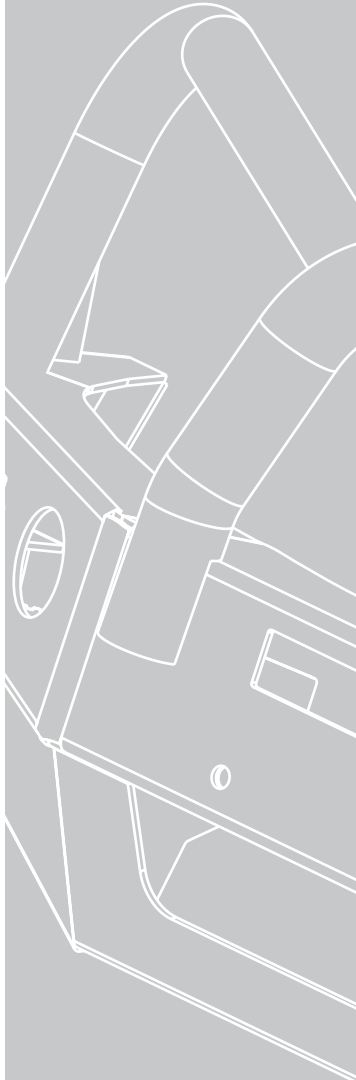
For online registration please go online to [www.ecb.com.au/warranty-registration](http://www.ecb.com.au/warranty-registration)  
If you have any questions please contact our national office on 1800 069 145 or  
[www.ecb.com.au](http://www.ecb.com.au).

## Or Post To:

PO Box 122, Margate, QLD 4019



REPLACES: N/A  
REVISED: 10.09.21



# **Strongest Built Australian Made Lifetime Warranty**

1800 069 145  
[www.ecb.com.au](http://www.ecb.com.au)

29 Snook St, Clontarf QLD 4019  
PO Box 122, Margate QLD 4019